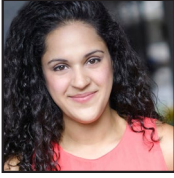


ASSOCIATE ARTISTIC DIRECTOR



Melissa Crespo (she/her) has made a career of developing new plays, musicals, and opera around the country and abroad. She recently directed the world premiere of *Bees and Honey* by Guadalís Del Carmen off-Broadway at MCC Theater. Other favorite past credits include, *Espejos: Clean* by Christine Quintana (Hartford Stage & Syracuse Stage), *form of a girl unknown* by Charly Evon Simpson (Salt Lake Acting Company), and *¡Figaro! (90210)* (The Duke on 42nd Street). As a playwright, her play *Egress*, co-written with Sarah Saltwick, had a world premiere at Amphibian Stage and won the Roe Green Award for Outstanding Achievement in Playwriting at Cleveland Play House. As a producer, she is one of the Founding Editors of 3Views on Theater, an online publication conceived by The Lillys. Fellowships and residencies include: Time Warner Fellow (WP Theatre), Usual Suspect (NYTW), The Director's Project (Drama League), Van Lier Directing Fellow (Second Stage Theatre), and the Allen Lee Hughes Directing Fellow (Arena Stage). Melissa received her M.F.A. in directing from The New School for Drama. <https://www.melissacrespo.com>